

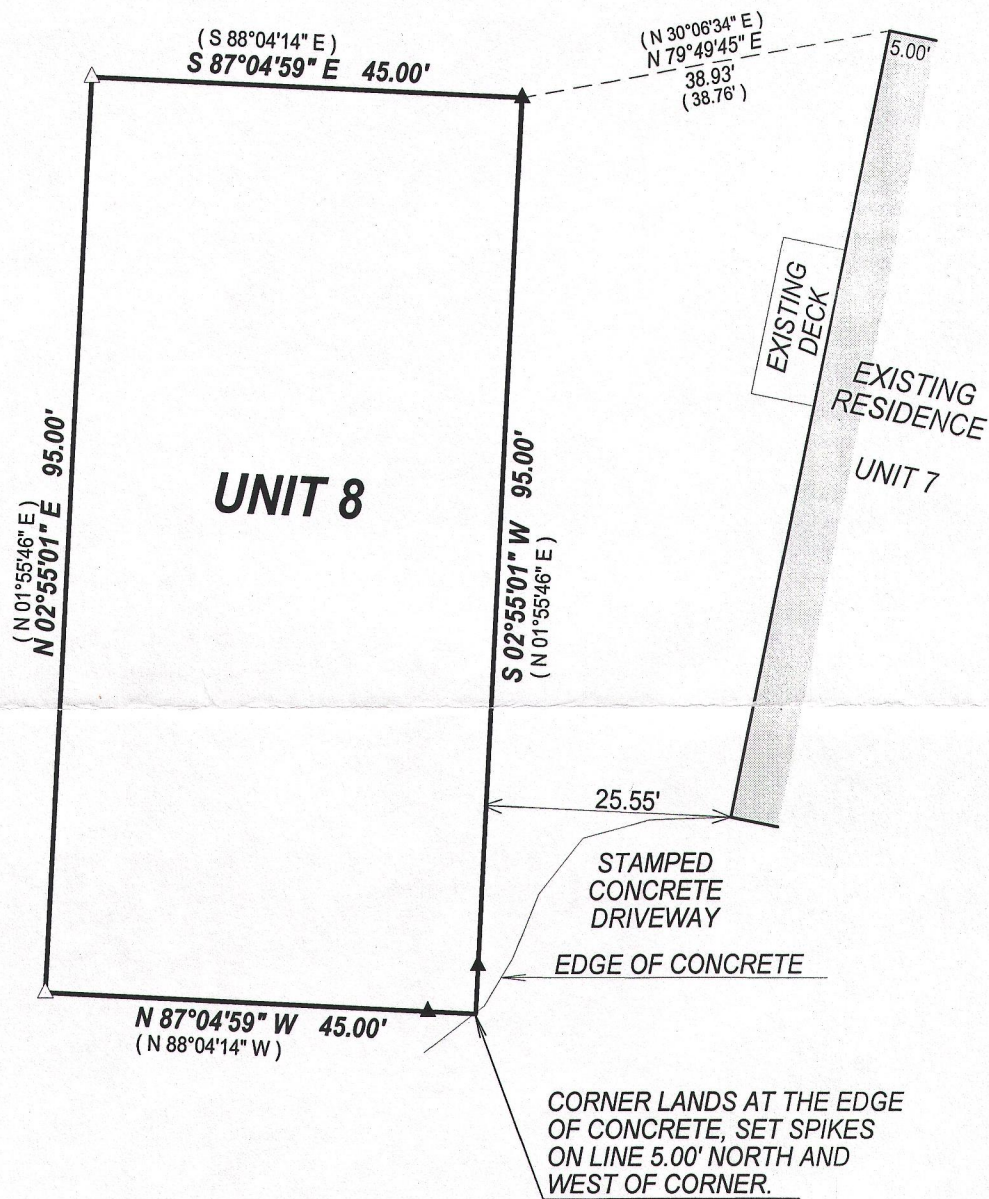
PREPARED FOR:
KEEFE REAL ESTATE, INC.
751 GENEVA PARKWAY
LAKE GENEVA, WI. 53147

PLAT OF SURVEY

-OF-

LYNCH & ASSOCIATES
ENGINEERING CONSULTANTS, LLC.
405 SKYLINE DRIVE, SUITE C
LAKE GENEVA, WI 53147
(262) 248-3697

UNIT 8 IN SOUTH SHORE CLUB ON LAKE GENEVA, BEING A CONDOMINIUM CREATED UNDER THE CONDOMINIUM OWNERSHIP ACT OF THE STATE OF WISCONSIN BY A DECLARATION OF CONDOMINIUM FOR SOUTH SHORE CLUB ON LAKE GENEVA RECORDED FEBRUARY 12, 2002 IN THE OFFICE OF THE REGISTER OF DEEDS FOR WALWORTH COUNTY, WISCONSIN AS DOCUMENT NO. 500526, AND AMENDED AND RESTATED IN THE FIRST AMENDED AND RESTATED DECLARATION OF CONDOMINIUM FOR SOUTH SHORE CLUB ON LAKE GENEVA, A WISCONSIN LAND CONDOMINIUM, DATED AS OF APRIL 16, 2002 AND RECORDED JUNE 5, 2002 AS DOCUMENT NO. 512553 AND BY A CONDOMINIUM PLAT THEREFOR, AND AS FURTHER AMENDED AND RESTATED IN THE SECOND AMENDED AND RESTATED DECLARATION OF CONDOMINIUM FOR SOUTH SHORE CLUB ON LAKE GENEVA, A WISCONSIN LAND CONDOMINIUM, DATED AUGUST 6, 2002 AND RECORDED AUGUST 20, 2002 AS DOCUMENT NO. 520275 AND BY A CONDOMINIUM PLAT THEREFOR, AND AS FURTHER AMENDED AND RESTATED IN THE THIRD AMENDED AND RESTATED DECLARATION OF CONDOMINIUM FOR SOUTH SHORE CLUB ON LAKE GENEVA, A WISCONSIN LAND CONDOMINIUM, DATED AUGUST 22, 2003 AND RECORDED AUGUST 28, 2003 AS DOCUMENT NO. 572980, AND AS FURTHER AMENDED AND RESTATED IN THE FOURTH AMENDED AND RESTATED DECLARATION OF CONDOMINIUM FOR SOUTH SHORE CLUB ON LAKE GENEVA, A WISCONSIN LAND CONDOMINIUM, DATED OCTOBER 22, 2003 AND RECORDED OCTOBER 23, 2003 AS DOCUMENT NO. 581115 AND BY A CONDOMINIUM PLAT THEREFOR, AND DECLARATION OF ADDITIONAL COVENANTS AND GRANT OF UTILITY EASEMENT DATED JULY 20, 2004 AND RECORDED AUGUST 10, 2004 AS DOCUMENT NO. 613251, AND AS FURTHER AMENDED AND RESTATED IN THE FIFTH AMENDED AND RESTATED DECLARATION OF CONDOMINIUM FOR SOUTH SHORE CLUB ON LAKE GENEVA, A WISCONSIN LAND CONDOMINIUM, DATED NOVEMBER 6, 2006 AND RECORDED NOVEMBER 6, 2006 AS DOCUMENT NO. 692931, AND AS FURTHER AMENDED AND RESTATED IN THE SIXTH AMENDED AND RESTATED DECLARATION OF CONDOMINIUM FOR SOUTH SHORE CLUB ON LAKE GENEVA, A WISCONSIN LAND CONDOMINIUM, DATED MARCH 4, 2013 AND RECORDED MARCH 7, 2013 AS DOCUMENT NO. 858640, SAID CONDOMINIUM BEING LOCATED IN THE TOWN OF LINN, COUNTY OF WALWORTH, STATE OF WISCONSIN ON THE REAL ESTATE DESCRIBED IN SAID DECLARATION AND INCORPERATED HEREIN BY THIS REFERENCE THRETO

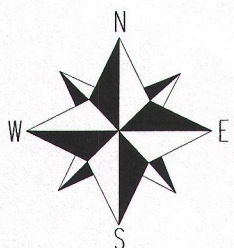


LEGEND

△ FOUND LANDSCAPE SPIKE

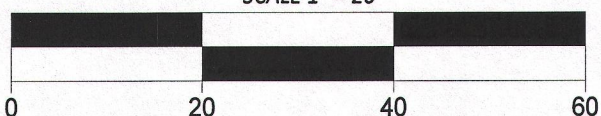
▲ SET LANDSCAPE SPIKE

(XX) RECORDED AS



BEARINGS HEREON RELATE TO THE
WISCONSIN COUNTY COORDINATE
SYSTEM, WALWORTH COUNTY ZONE.

SCALE 1" = 20'

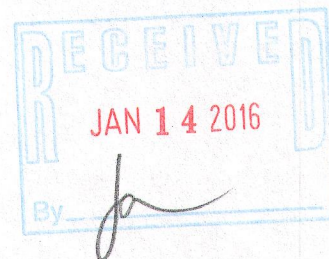


NOTE:

No title commitment or results of a title search were provided to this office pertaining to this survey. This Plat Of Survey may not reflect easements of record, encumbrances, restrictions, ownership, title evidence, or other facts that a current and accurate title search may disclose.

I have surveyed the above-described property and the above map is a true representation thereof and shows the size and location of the property, its exterior boundaries, the location and dimensions of all structures thereon, fences apparent easements and roadways and visible encroachments. if any.

This survey is made for the exclusive use of the present owners of the property, and also those who purchase, mortgage, or insure the title thereto within one (1) year from date hereof; and as to them I warrant the accuracy of said survey map.



DATED THIS 27th DAY OF AUGUST, 2015

KENNETH B. MEHRING S - 2838
Wisconsin Professional Land Surveyor
(original if signed in red)